

**100RB 2S3VLC**

# 100RB Series Refrigerant Solenoid Valves

The 100RB is a direct-acting, 2-way, normally closed valve used for liquid or discharge gas refrigerant service.

## Features

- Single coil family fits all valve sizes
- Extended ends for easy installation (standard)
- SAE or ODF connection sizes in 1/4" and 3/8" or 1/4" NPTF
- Field serviceable parts available
- Compatible with all common A1, A2L, and A3 class refrigerants (refer to the capacity tables)

## Specifications

Maximum fluid temperature.....250°F (121°C)  
 Maximum working pressure .....500 psig (35 bar)  
 Maximum operating pressure differential.....300 psig (21 bar)  
 UL/CUL file number.....MP604  
 Canadian CRN.....0C21506.513467890YTN

### Model number nomenclature - Example: 100RB 2F2VLC

Valve series	Port size	Connection type	Connection size	*Coil	Sequential identifier	Customer special	Pack type
100RB	2	F	2	VLC			
Direct-Acting Refrigerant Solenoid Valves	In 1/16"	F = SAE S = ODF Extended Ends P = NPTF	In 1/8" Increments	VLC = Valve Less Coil  For Valves with Coil See Coil Nomenclature on Coil Catalog Page	Blank Thru -99	G = Customer Special  (Omit for Standard)	B1 = Bulk Pack  (Omit for Individual Pack)

\* Valves in catalog are shipped without solenoid coils (VLC = Valve Less Coil). See coil pages for coil selection and a complete list of voltage options.

### 100RB Series Refrigerant Solenoid Valves

Port size (in)	Connection size & type	Nominal liquid capacity -tons (kw)							Model number	Item number
		R-22	R-134a	R-290	R-404a / R-507	R-407c	R-448a / R-449a	R-450a / R-513a		
1/8	1/4" SAE	1.3 (4.5)	1.0 (3.4)	1.3 (4.5)	0.9 (3.0)	1.2 (4.3)	1.3 (4.5)	0.9 (3.1)	100RB 2F2VLC	047500
	1/4" NPTF								100RB 2P2VLC	047502
	1/4" ODF								100RB 2S2VLC	047503
	3/8" SAE								100RB 2F3VLC	047501
	3/8" ODF								100RB 2S3VLC	047504
	1/2" ODF								100RB 2S4VLC	047505

NOTE: Capacities based on 100°F liquid and 40°F saturated evaporator per ARI standard 760-87.



Detailed product drawings

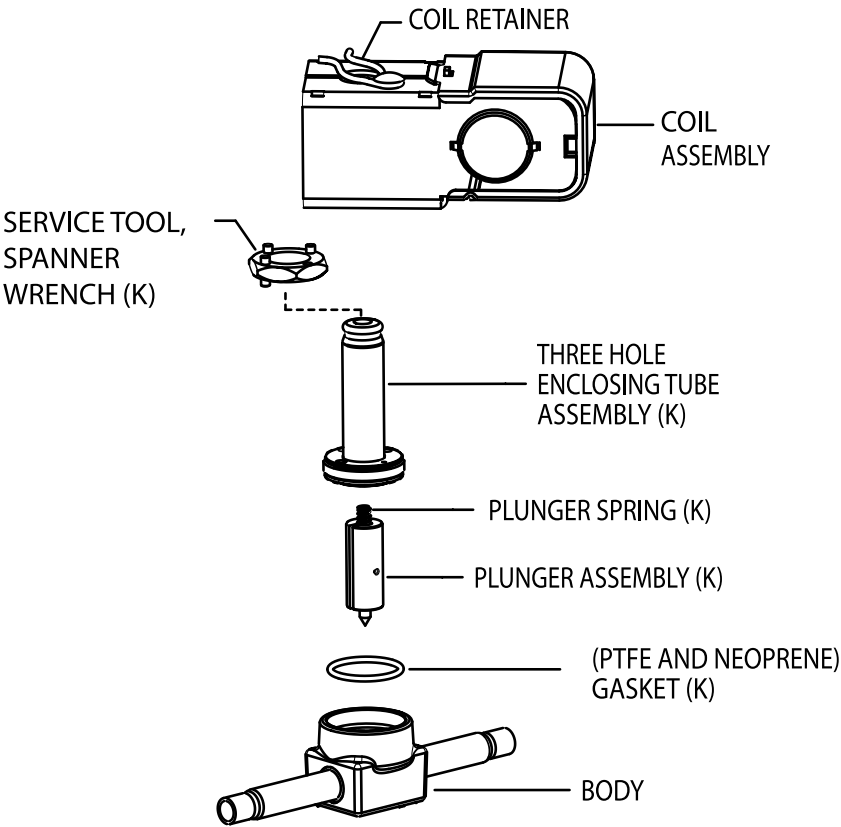
Extended capacity tables



Exploded view & parts kit data

100RB series part kits

Description	Model number	Item number
Valve Repair Kit (K)	KS-30112	049191
Universal (2/3 hole) spanner wrench	X-11981-1	027451
Parts Kit (Contains 12 pieces each of PTFE and neoprene O-rings)	KG-10041	054812
Magnetic Solenoid Tool opens a normally closed solenoid valve in the de-energized state, incorporates a spanner wrench for easy disassembly of solenoid valve series 100RB, 200RB, 240RA and provides an orifice to manually adjust opening stem.	Solenoid tool	066019



Valve repair kit  
(K) indicates part is supplied in valve repair kit.